



KEY  
STYLES





# CONTENTS

PERFORMANCE	03
T-SHIRTS - FASHION	07
T-SHIRTS - ESSENTIALS	08
POLOS & CASUAL	11
HOODIES	18
SWEATSHIRTS	22
SWEATPANTS	26
KIDS & SCHOOLWEAR	29
KIDS SPORTS	38
WOMEN'S FASHION	41
SHIRTS & BLOUSES	45
KNITWEAR	49
APRONS & SERVICE	51
CHEFSWEAR	53
HEALTH & BEAUTY	54
WORKWEAR	55
JACKETS	58
BAGS	65
HEADWEAR	67





FITNESS  
T-SHIRT

TR010

WICKING PROPERTIES



QUICK DRYING

LIGHTWEIGHT

GO ABOVE & BEYOND

PANELLED  
T-SHIRT

TR011

TR021

**TR010**

**TriDri® fitness t-shirt**

F 100% Polyester

W 135gsm

**S** 34" **M** 38" **L** 42" **XL** 46" **2XL** 50" **3XL** 54"

**TR011**

**Panelled TriDri® t-shirt**

F 100% Polyester

W 135gsm

**S** 34" **M** 38" **L** 42" **XL** 46" **2XL** 50" **3XL** 54"

**TR021**

**Women's panelled TriDri® t-shirt**

F 100% Polyester

W 135gsm

**XS** 8 **S** 10 **M** 12 **L** 14 **XL** 16

COLOUR KEY

	Black	Fire Red	French Navy	Sapphire	White	Charcoal	Electric Green	Sun Yellow
TR010	✓				✓			
TR011	✓	✓	✓	✓	✓	✓	✓	✓
TR021	✓	✓	✓	✓	✓	✓	✓	✓

PERFORMANCE



JC001

JC005

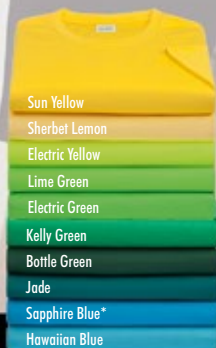
**JC001**  
Cool T

F 100% Polyester  
W 140gsm

**XS** 35" **S** 38" **M** 40" **L** 43" **XL** 45"  
**2XL** 48" **3XL** 50" **4XL** 52" **5XL** 54"

\*3XL only available in these colours.

†4XL and 5XL only available in these colours



**JC005**  
Women's cool T

F 100% Polyester  
W 140gsm

**XS** 8 **S** 10 **M** 12 **L** 14 **XL** 16 **2XL** 18

\*2XL only available in these colours







A TEXTURED  
POLYESTER  
FABRIC WITH  
INHERENT  
WICKABILITY  
AND QUICK  
DRYING  
PROPERTIES



## JC040 Cool polo

F 100% Polyester  
W 140gsm

S 38" M 40" L 43" XL 45" 2XL 48" 3XL\* 51"

\*3XL only available in these colours

# COOL POLO



JC040

PERFORMANCE

## COOL TAPERED ELASTICATED TIGHT FIT PRODUCTS

JC045

## JC045 Girlie cool polo

F 100% Polyester  
W 140gsm

XS 8 S 10 M 12 L 14 XL 16 2XL\* 18

\*2XL only available in these colours



GIRLIE COOL POLO

**NK251****DRI-FIT****VICTORY  
SOLID  
POLO**

A high-performance, microfibre, polyester fabric that moves sweat away from the body and to the fabric surface, where it evaporates.

Dri-FIT keeps athletes dry and comfortable.

**NK251****Victory solid polo**

F 100% Polyester pique Dri-Fit  
W 170gsm

**S** 38" **M** 41" **L** 44" **XL** 47" **2XL** 50"

Black	Classic Green	College Navy	Court Purple	Game Royal
Pewter Grey	Team Orange	University Blue	University Red	Vivid Pink
Volt	White			



- ▶ **KEEPS YOU WARM AND DRY IN COLD CONDITIONS**
- ▶ **FITS LIKE A SECOND SKIN**
- ▶ **SUITABLE FOR:**
  - » FOOTBALL
  - » RUGBY
  - » HOCKEY
  - » CRICKET
  - » GOLF
  - » CYCLING
  - » EQUESTRIAN
  - » WINTER SPORTS
- ▶ **THE TURTLENECK CAN BE PERSONALISED WITH A LOGO OR TEXT**

**RH001****RH001****Rhino base layer long sleeve adults**

F 90% Polyester, 10% Spandex  
W 260gsm

**XS** 34/36" **S/M** 38/40" **L/XL** 46/48"  
**2XL** 50/52" **3XL** 54/56"

**LONG  
SLEEVE  
BASE LAYER**

**AVAILABLE IN  
17 COLOURS**



Light Blue Royal Navy Bottle Green Green Fluorescent Yellow Yellow Amber Orange Red Maroon Purple Pink Light Pink White Black Heather Grey

**BELLA+CANVAS.**  
LOS ANGELES

# ULTIMATE FASHION T-SHIRT

**CV001**  
**Jersey crew neck t-shirt**

F 100% Combed and ringspun cotton, 30 single. Athletic Heather: 90% Combed and ringspun cotton, 10% Polyester. Dark Heather Grey: 52% Combed and ringspun cotton, 48% Polyester

W 145gsm

**XS** 35" **S** 37" **M** 39" **L** 42" **XL** 44" **2XL** 46"

**CV001**



T-SHIRTS - FASHION



# B&C

COLLECTION



**BA101**

## BA101 Men-only

Single jersey, 100% Pre-shrunk ringspun cotton w 145gsm

**S** 36/38" **M** 38/40" **L** 41/42" **XL** 43/44"  
**2XL** 45/47"



Atoll Black Deep Red Diva Blue Green Moss



Navy Pumpkin Orange Purple Real Green Red



Sport Grey Swimming Pool Used Yellow White

# GILDAN®

**GD072**

**GD001**

*durable &  
VERSATILE*

## GD072 Softstyle™ women's ringspun t-shirt

100% Cotton, Sport Grey: 90% Cotton, 10% Polyester.  
All Heathers: 65% Polyester, 35% Cotton w White 140gsm, Colours 150gsm

**S** 8/10 **M** 10/12 **L** 12/14 **XL** 14/16  
**2XL** 18/20



Antique Cherry Red Antique Heliconia Antique Sapphire Azalea Black



Charcoal Cherry Red Chestnut Cobalt Cornsilk



Daisy Dark Chocolate Dark Heather Heather Orange Heather Purple



Heliconia Indigo Blue Irish Green Kiwi Light Blue



Light Pink Mint Green Navy Purple Red



Royal Sand Sapphire Sport Grey White

## GD001 Softstyle™ adult ringspun t-shirt

100% Cotton, Sport Grey: 90% Cotton, 10% Polyester.  
All heathers: 65% Polyester, 35% Cotton w White 140gsm, Colours 150gsm

**S** 34/36" **M** 38/40" **L** 42/44"  
**XL** 46/48" **2XL** 50/52" **3XL** 54/56"

\*3XL only available in these colours

*Pre-shrunk  
fabric for  
reduced  
shrinkage  
after wash*

Heather Military Green

Chestnut

Dark Chocolate

Forest

Military Green

Irish Green

Heather Irish Green

Kiwi

Indigo Blue

Navy\*

Heather Navy

RS Sport Grey\*

Cornsilk

White\*

Mint Green

Dark Heather

Charcoal

Black\*

Sand

Antique Cherry Red

Cardinal Red

Red\*

Cherry Red

Heliconia

Antique Heliconia

Heather Orange

Orange

Daisy

Sapphire

Heather Royal

Cobalt

Royal\*

Antique Sapphire

Light Blue

Heather Purple

Purple



FRUIT OF THE LOOM®

SOFTSPUN® TEES

SS412

SS414



### SS412 Softspun® tee

F 100% Cotton. Heather Grey: 97% cotton, 3% polyester

W White 160gsm, Colours 165gsm

S 35/37" M 38/40" L 41/43" XL 44/46"

2XL 47/49" 3XL 49/51"



### SS414 Lady-fit Softspun® tee

F 100% Cotton. Heather Grey: 97% cotton, 3% polyester

W White 160gsm, Colours 165gsm

XS 8 S 10 M 12 L 14 XL 16 2XL 18



### SS030 Valueweight tee

F 100% Baumwolle

W 165gsm

S 35/37" M 38/40" L 41/43" XL 44/46"

2XL 47/49" 3XL 50/52" 4XL 53/55"

5XL 56/58"

\*3XL - 5XL only available in these colours



SS030

T-SHIRT - ESSENTIALS

# American Apparel®

The iconic tee that  
changed the industry

## AA001

Fine jersey short sleeve tee (2001)

F 100% Cotton

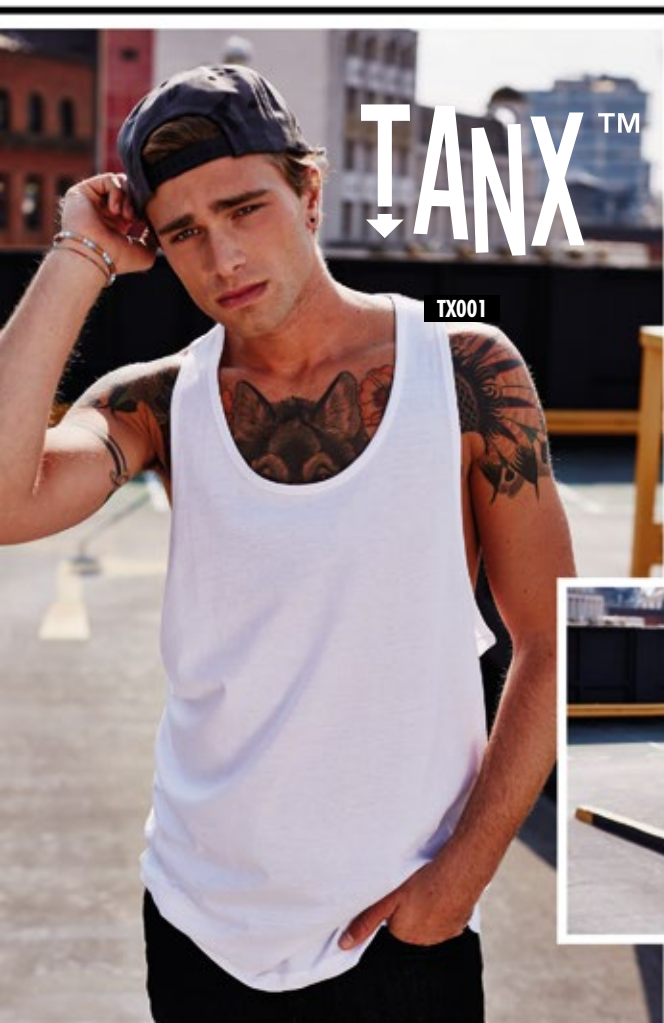
w 146gsm

S 34/36" M 38/40" L 42/44" XL 46/48" 2XL 48/50"

Fine Jersey  
Short Sleeve Tee  
UNISEX



AA001



TX001

## MUSCLE VEST

### TX001

Tanx vest top

F Black, White: 100% Cotton.

Grey Marl: 95% Cotton, 5% Viscose

w 115gsm

XS 34" S/M 39" L/XL 44"



Black

Heather Grey

White

TEAR-OUT

LABEL





# ASQUITH & FOX®



## AQ011

### Men's classic fit - tipped polo

F 100% Ringspun combed cotton. Heather: 85% Cotton, 15% Viscose

V 200gsm

S 37" M 40" L 42" XL 44" 2XL 47" 3XL 49"

#### TIPPED POLO COLOURS

Black/White

Black/Yellow

Black/Orange

Black/Red

Burgundy/Sky

Charcoal/White

Lime/Navy

Navy/Cornflower

Navy/White

Red/White

Royal/White

Sky/Navy

White/Black

White/Navy

## AQ012

### Men's classic fit - contrast polo

F 100% Ringspun combed cotton

V 200gsm

S 39" M 42" L 44" XL 46.5" 2XL 49" 3XL 51"

## AQ012



Black/  
Red

Heather/  
Navy

Navy/  
White

Purple/  
Pink

Red/  
White

Turquoise/  
Red

CONTRAST  
COLLAR  
PLACKET IN  
6 COLOURS



AQ011

POLOS & CASUAL

# ASQUITH & FOX®

## AQ040

Men's classic fit long sleeve vintage rugby shirt

F 100% Cotton

W 260gsm

S 37" M 40" L 42" XL 44" 2XL 47" 3XL 49"



Black Navy Sapphire White

AQ040

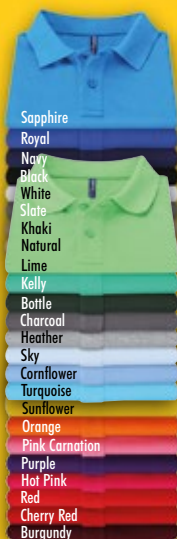


LONG SLEEVED  
VINTAGE RUGBY  
SHIRT

## CLASH WITH CONFIDENCE



AQ020



## AQ020

Women's polo

F 100% Ringspun combed cotton.

Heather Grey: 85% Cotton, 15% Viscose.

Charcoal: 60% Cotton, 40% Polyester

W 200gsm

XS 30" S 34" M 38" L 42" XL 46"

CLASSIC  
FIT



FOR HER



## CLASSIC FIT



FOR HIM

## AQ010 Men's polo

100% Ringspun combed cotton.  
Charcoal and Heather Colours: 60%  
Cotton, 40% Viscose. Heather Grey: 85%  
Cotton, 15% Viscose. Neon Colours: 65%  
Polyester, 35% Cotton.

W 200gsm

S 37" M 40" L 42" XL 44" 2XL 47"

3XL 49" 4XL 51" 5XL 53"

\*4XL and 5XL only available in these colours



## NEW SPECIAL EFFECT COLOURS



NEONS



ACID WASH



HEATHERS

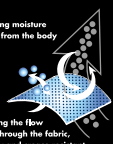




PR615

**COOL**  
CHECKER®

Drawing moisture  
away from the body



Allowing the flow  
of air through the fabric,  
fast dry and crease resistant.

PR616

## FITTED STYLES

- ◆ SHAPED TO FIT
- ◆ FAST DRY
- ◆ BUTTON POLO
- ◆ MOISTURE MANAGEMENT
- ◆ CREASE RESISTANT
- ◆ HIS & HER SIZES

### PR615

Coolchecker® piqué polo

F 100% Polyester piqué  
W 155gsm

S 34" M 38" L 42" XL 46" 2XL 50" 3XL 54"

### PR616

Women's Coolchecker® piqué polo

F 100% Polyester piqué  
W 155gsm

XS 8 S 10 M 12 L 14 XL 16 2XL 18



**PREMIER**  
UNIFORMS THAT WORK FOR YOU



# B&C SAFRAN

THE ICONIC REFERENCE SINCE 2003

41 million people can't be wrong. B&C Safran, the market reference polo shirt made of 100% ringspun combed cotton. B&C Fine Piqué, for elegance, comfort and perfect printability.

POLOS & CASUAL

## BA301 Safran

F Piqué 100% Pre-shrunk ringspun combed cotton w 180gsm

S 36/38" M 38/40" L 41/42" XL 43/44"

2XL 45/47" 3XL\* 47/49"

\*3XL only available in these colours



## BA370 Safran pure /women

F Piqué 100% Pre-shrunk ringspun combed cotton w 180gsm

XS 8 S 10 M 12 L 14 XL 16 2XL\* 18

\*2XL only available in these colours



FOR HIM



FOR HER

WE LOVE COLOURS

# Klassic

KUSTOM KIT®

## KK703

Klassic polo women's with Superwash® 60°C

F 65% Polyester, 35% Cotton  
W 185gsm

6 8 10 12 14 16 18 20 22



KK703

KK403

## KK403

Klassic polo with Superwash® 60°C

F 65% Polyester, 35% Cotton  
W 185gsm

XS 32/34" S 36/38" M 40" L 42" XL 44"

2XL 46/48" 3XL 50/52" 4XL 54/56"

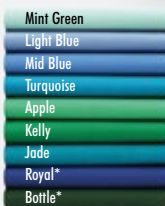
5XL 58/60"

\*4XL and 5XL only available in these colours

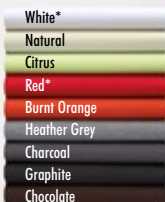
# Superwash®

Can be washed at 60 degrees

KK403 available in 28 colours



OEKO-TEX







FRONT ROW & CO

# EARN YOUR STRIPES!

FR210

FR211

## FR210 Striped piqué polo

F 100% Cotton  
W 200gsm

**XS** 32/34" **S** 34/36" **M** 37/39" **L** 40/42"  
**XL** 43/45" **2XL** 46/48"



Heather  
Grey/  
Navy

Navy/  
Pink

Navy/  
White

Reg  
Blue/  
Navy

## FR211 Women's striped piqué polo

F 100% Cotton  
W 200gsm

**XS** 8 **S** 10 **M** 12 **L** 14 **XL** 16 **2XL** 18



Navy/  
Pink

Navy/  
White



JH01F



THE GIRLIE  
COLLEGE HOODIE  
IS AVAILABLE  
IN **25 COLOURS**  
WITH SIDE  
SHAPED SEAMS  
**FOR A MORE  
DEFINED FIT!**

**JH01F**  
**Girlie college hoodie**

F 80% Ringspun cotton, 20% Polyester  
w 280gsm

**XS 8 S 10 M 12 L 14 XL 16 2XL 18**

Airforce Blue	Arctic White	Ash	Bottle Green	Burgundy
Candyfloss Pink	Charcoal	Fire Red	Hawaiian Blue	Heather Grey
Hot Pink	Jade	Jet Black	Kelly Green	Lime Green
New French Navy	Orange Crush	Plum	Purple	Red Hot Chili
Royal Blue	Sapphire Blue	Sky Blue	Sun Yellow	Turquoise Surf



Sherbet Lemon
Sun Yellow*
Gold
Orange Crush
Sunset Red
Burnt Orange
Brick Red
Candyfloss Pink*
Baby Pink*
Lipstick Pink
Cranberry
Burgundy*
Red Hot Chili*
Fire Red**
Lavender
Pinky Purple
Hot Pink*
Plum
Magenta Magic
Purple**
Ultra Violet
True Violet
Cornflower Blue
Sky Blue
Sapphire Blue*
Tropical Blue
Royal Blue**
Denim Blue
Hawaiian Blue*
Turquoise Surf
Peppermint
Jade*
Deep Sea Blue
Airforce Blue
Oxford Navy**
Apple Green*
Alien Green
Lime Green
Spring Green
Bottle Green*
Moss Green
Kelly Green*
Vanilla Milkshake
Desert Sand
Hot Chocolate
Steel Grey
Olive Green
New French Navy**
Forest Green
Ash
Arctic White*
Moondust Grey
Heather Grey**
Charcoal*
Storm Grey
Jet Black**

## JH001 College hoodie

F 80% Cotton, 20% Polyester  
W 280gsm

**XS\*** 34" **S** 36" **M** 40" **L** 44" **XL** 48"  
**2XL** 52" **3XL** 56" **4XL** 60" **5XL** 64"

\*XS only available in these colours.

\*\*3XL only available in these colours.

\*4XL-5XL only available in these colours.

## JH001 College Hoodie

Soft cotton  
faced fabric,  
creates ideal  
print surface



JH001







## JH003 Varsity Hoodie



### JH003 Varsity hoodie

F 80% Cotton, 20% Polyester

W 280gsm

XS\* 34" S 36" M 40" L 44" XL 48"

2XL 52" 3XL† 56" 4XL† 60" 5XL† 64"

\*XS only available in these colours.

†3XL only available in these colours.

‡4XL - 5XL only available in these colours.



JH003



## AA004 Flex fleece zip hoodie (F497)

F 50% Cotton fleece, 50% Polyester  
W 278gsm

**XS** 30/32" **S** 34/36" **M** 38/40" **L** 42/44" **XL** 46/48" **2XL** 48/50"



**AA004**

**American Apparel®**

## GD057 HeavyBlend™ hooded sweatshirt

F 50% Cotton, 50% Polyester  
W 265gsm, Colours 279gsm

**S** 34/36" **M** 38/40" **L** 42/44" **XL** 46/48"

**2XL** 50/52" **3XL** 54/56" **4XL** 58/60"

**5XL** 62/64"

\*3XL - 5XL only available in these colours



**GILDAN®**  
*Heavy Blend™*

*DOUBLE  
LINED*



**GD057**

**HOODIES**



**FRUIT OF THE LOOM®**

**CLASSICHOODIES**

## SS224 Classic 80/20 hooded sweatshirt

F 80% Cotton, Belcora® yarn, 20% Polyester  
W 280gsm

**S** 35/37" **M** 38/40" **L** 41/43" **XL** 44/46"

**2XL** 47/49"



**SS224**



# JH043 Varsity Jacket

## JH043 Varsity jacket

F 80% Cotton, 20% Polyester  
w 330gsm

XS 32" S 34" M 38" L 42" XL 46" 2XL 50"



Burgundy/Heather Grey  
Fire Red/White  
Heather Grey/White  
Hot Pink/White  
Jet Black/Fire Red



Jet Black/Heather Grey  
Jet Black/Sun Yellow  
Jet Black/White  
Kelly Green/White  
Oxford Navy/Burgundy



Oxford Navy/Heather Grey  
Oxford Navy/White  
Purple/Heather Grey  
Purple/White  
Royal Blue/White



Sapphire Blue/Heather Grey

JH043



SMARTPHONE  
COMPATIBLE

## JH033 Baseball sweatshirt

F 80% Ringspun cotton, 20% Polyester  
w 280gsm

S 36" M 40" L 44" XL 48" 2XL 52"



Burgundy/Charcoal  
Charcoal/Jet Black  
Heather Grey/Jet Black  
Jet Black/Fire Red  
Oxford Navy/Burgundy



Oxford Navy/Heather Grey

JH033

# JH033 Baseball Sweatshirt



The decoration on the sweatshirts is for illustrative purposes only – the garments are supplied blank.



Soft cotton  
faced fabric,  
creates ideal  
print surface

## JH030

### AWDis sweatshirt

F 80% Cotton, 20% Polyester  
W 280gsm

**XS** 34" **S** 36" **M** 40" **L** 44" **XL** 48" **2XL** 52" **3XL** 56"

\*3XL only available in these colours

JH030

SWEATSHIRTS





**RX300**



**RTXTRA**

## THE CLASSIC WORKWEAR SWEATSHIRT

### RX300 Classic sweatshirt

F 80% Cotton, 20% Polyester  
W 280gsm

S 34" M 38" L 42" XL 46" 2XL 50"

3XL 53" 4XL 56"

\*4XL only available in these colours



**FRUIT OF THE LOOM®**

### SS270 Classic 80/20 raglan sweatshirt

F 80% Cotton, Belcoro® yarn, 20% Polyester  
W 280gsm

S 35/37" M 38/40" L 41/43" XL 44/46"

2XL 47/49"



**SS270**



CLASSIC 80/20  
SWEATSHIRTS

**Belcoro®**  
THE NEW DEFINITION OF YARN  
Better feel for comfort



**GILDAN®**  
Heavy Blend™

**GD056**  
**HeavyBlend™ adult crew neck**  
**sweatshirt**

F 50% Cotton, 50% Polyester fleece  
W White 265gsm, Colours 279gsm

**S** 34/36" **M** 38/40" **L** 42/44" **XL** 46/48"

**2XL** 50/52" **3XL\*** 54/56" **4XL\*** 58/60"

**5XL\*** 62/64"

\*3XL - 5XL only available in these colours

**GD056**

*absolute  
essential*

Antique Cherry Red

Antique Sapphire

Ash

Black\*

Carolina Blue

Charcoal

Cherry Red

Dark Chocolate

Dark Heather

Forest Green

Garnet

Gold

Heliconia

Indigo Blue

Irish Green

Kiwi

Light Blue

Light Pink

Maroon

Military Green

Navy\*

Orange

Purple

Red\*

Royal\*

Safety Green

Safety Orange

Safety Pink

Sapphire

Sport Grey\*

White\*

SWEATSHIRTS



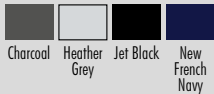


## CLASSIC CUFFED SWEATPANTS

### JH072 College cuffed sweatpants

F 80% Cotton, 20% Polyester  
W 280gsm

S 30" M 32" L 34" XL 36"



### JH076 Girlie cuffed sweatpants

F 80% Cotton, 20% Polyester  
W 280gsm

XS 8 S 10 M 12 L 14



FOR HIM

Elasticated waist  
Side pockets



FOR HER

Cuffed leg  
opening

## DROPPED CROTCH JOG PANTS

JH073

### JH073 Dropped crotch jog pants

F 80% Ringspun cotton, 20% Polyester  
W 280gsm

S 30" M 32" L 34" XL 36"



The decoration on the sweatpants is for decoration purposes only - the garments are supplied blank.

## OPEN LEG CAMPUS SWEATPANTS

### JH070

#### Campus sweatpants

F 80% Cotton, 20% Polyester

W 330gsm

S 30" M 32" L 34" XL 36"



French  
Navy

Heather  
Grey

Jet Black

### JH075

#### Girly sweatpants

F 80% Cotton, 20% Polyester

W 280gsm

XS 8 S 10 M 12 L 14

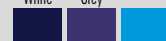


Arctic  
White

Heather  
Grey

Hot Pink

Jet Black



New  
French  
Navy

Purple

Sapphire  
Blue

JH070



Deep rib  
waistband

Side pockets

Single back  
patch pocket

JH075



Open  
hem leg

FOR HIM

FOR HER

Deep rib waistband

Side  
pockets

JH080

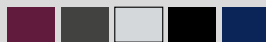


### JH080 Campus shorts

F 80% Cotton, 20% Polyester

W 330gsm

S 30" M 32" L 34" XL 36" 2XL 38"



Burgundy

Charcoal

Heather  
Grey

Jet Black

New  
French  
Navy

## DRAWCORD CAMPUS SHORTS

JH080  
Campus  
Shorts



FRUIT OF THE LOOM®



SS404

**SS404**  
**Premium 70/30 lady-fit French sweatpants**

F 75% Cotton, 25% Polyester  
W 280gsm

**XS 8 S 10 M 12 L 14 XL 16 2XL 18**



Black Deep Navy Heather Grey

**SS805**  
**Premium 70/30 elasticated sweatpants**

F 70% Cotton, 30% Polyester  
W 280gsm

**S 32" M 34" L 36" XL 38" 2XL 40"**



Black Deep Navy Heather Grey

PREMIUM

Super soft and with brushed fabric, our Premium Sweatpants are made from 70% ringspun cotton and 30% polyester.



SS805



# THE KIDS Hoodie



JH01J



JH01J



## JH01J Kids hoodie

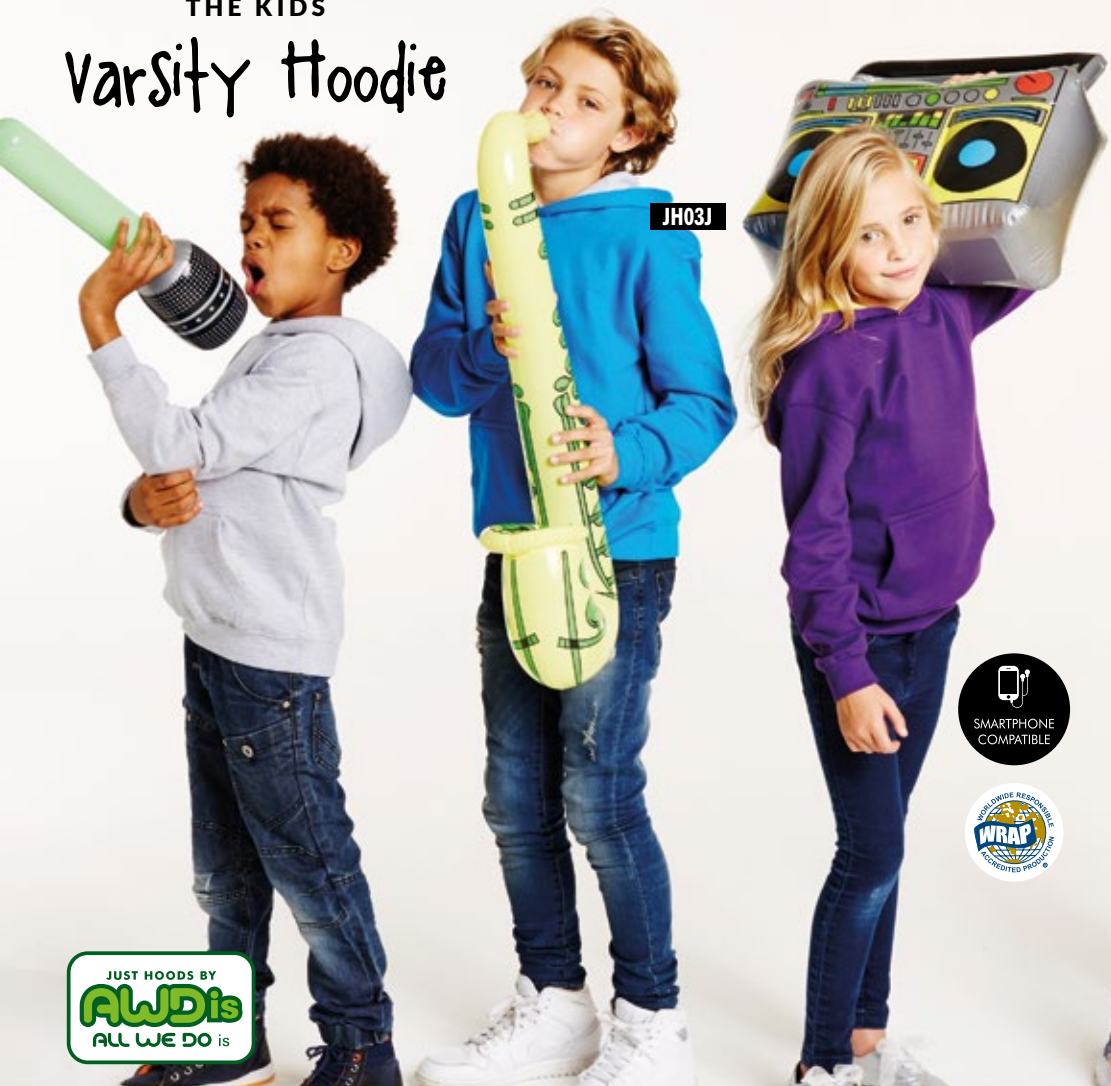
F 80% Cotton 20% Polyester  
W 280gsm

1/2 24" 3/4 26" 5/6 28"  
7/8 30" 9/11 32" 12/13 34"

THE DECORATION  
ON THE HOODIE IS  
FOR ILLUSTRATIVE  
PURPOSES ONLY -  
THE GARMENT IS  
SUPPLIED BLANK.

Arctic White	Ash	Baby Pink	Bottle Green	Burgundy	Candyfloss Pink	Charcoal
Fire Red	Forest Green	Hawaiian Blue	Heather Grey	Hot Pink	Jade	Jet Black
Kelly Green	Lime Green	New French Navy	Orange Crush	Oxford Navy	Plum	Purple
Red Hot Chili	Royal Blue	Sapphire Blue	Sky Blue	Sun Yellow		

# THE KIDS Varsity Hoodie



JUST HOODS BY  
**AWD**is  
ALL WE DO is



## JH03J Available in 18 colours...

**JH03J**

**Kids varsity hoodie**

F 80% Cotton, 20% Polyester  
W 280gsm

3/4 26" 5/6 28" 7/8 30" 9/11 32"  
12/13 34"



JH30J Available in 24 colours...



## THE KIDS

# Varsity Jacket

**JH43J**

Kids varsity jacket

F 80% Cotton, 20% Polyester  
w 330gsm

3/4 26" 5/6 28" 7/8 30" 9/11 32" 12/13 34"

**JH43J**



**JH30J**



THE DECORATION ON THE SWEATSHIRT IS FOR ILLUSTRATIVE PURPOSES ONLY. THE GARMENT IS SUPPLIED BLANK.

## THE KIDS AWDIS

# Sweatshirt

**JH30J**

Kids AWDIs sweatshirt

F 80% Ringspun cotton, 20% Polyester  
w 280gsm

3/4 26" 5/6 28" 7/8 30" 9/11 32" 12/13 34"

JH43J Available in 16 colours...





# maddins®

## MD01B

### Kids Coloursure™ sweatshirt

F 44% Polyester, 40% Acrylic, 16% Cotton  
W 260gsm

22" 24" 26" 28" 30" 32" 34" 36"



Black Bottle Burgundy Emerald Navy



Ocean Royal Oxford Grey Purple Raspberry Red



Royal Sunflower



MD01B

CREW-NECK  
SWEATSHIRT

MD19B



## MD19B

### Kids v-neck fully fashioned jumper

F 50% Cotton, 50% Acrylic  
W 14 Gauge

26/28" 30" 32" 34" 36"



Black Navy

## MD02B

### Kids Coloursure™ v-neck sweatshirt

F 44% Polyester, 40% Acrylic, 16% Cotton  
W 260gsm

24" 26" 28" 30" 32" 34" 36"



Black Bottle Burgundy Navy



Oxford Grey Red Royal

V-NECK SWEATSHIRT

MD02B

KNITTED JUMPER



**Academy V-Neck  
Sweatshirt**

**Academy Raglan  
Sweatshirt**

**Academy  
Cardigan**

**AC03J/AC003**

**Academy v-neck sweatshirt**

F 80% Cotton, 20% Polyester  
w 280gsm

**AC03J Kids academy  
v-neck sweatshirt**

**XS** 3/4 **S** 5/6 **M** 7/8 **L** 9/10 **XL** 11/12 **2XL** 13

**AC003 Academy v-neck sweatshirt**

**XS** 34" **S** 36" **M** 40" **L** 44" **XL** 48" **2XL** 52"

**AC01J/AC001**

**Academy raglan sweatshirt**

F 80% Cotton, 20% Polyester  
w 280gsm

**AC01J Kids academy  
raglan sweatshirt**

**XS** 3/4 **S** 5/6 **M** 7/8 **L** 9/10 **XL** 11/12 **2XL** 13

**AC001 Academy raglan sweatshirt**

**XS** 34" **S** 36" **M** 40" **L** 44" **XL** 48" **2XL** 52"

**AC02J**

**Academy cardigan**

F 80% Cotton, 20% Polyester  
w 280gsm

**XS** 3/4 **S** 5/6 **M** 7/8 **L** 9/10 **XL** 11/12 **2XL** 13

Get them set for school  
with our innovative, practical  
and easy-to-care uniform!  
**SEE GRID FOR OUR  
RANGE OF COLOURS**

COLOUR KEY	Academy Black	Academy Burgundy	Academy Claret	Academy Charcoal	Academy Deep Royal	Academy Emerald	Academy Green	Academy Grey	Academy Navy	Academy Purple	Academy Red	Academy Royal Blue	Academy Sapphire	Academy Sky
AC02J	✓	✓	✓	✓	✓	✓	✓	✓	✓	✓	✓	✓	✓	✓
AC001	✓	✓	✓	✓	✓	✓	✓	✓	✓	✓	✓	✓	✓	✓
AC03J	✓	✓	✓	✓	✓	✓	✓	✓	✓	✓	✓	✓	✓	✓
AC01J	✓	✓	✓	✓	✓	✓	✓	✓	✓	✓	✓	✓	✓	✓
AC003	✓	✓	✓	✓	✓	✓	✓	✓	✓	✓	✓	✓	✓	✓



jerzees  
schoolgear

## KIDS RAGLAN SLEEVE SWEATSHIRT

7620B

**7620B**

**Kids raglan sleeve sweatshirt**

50% Combed ringspun cotton, 50% Polyester  
295gsm

1/2 20/23" 3/4 22/25" 5/6 25/28"  
7/8 28/30" 9/10 30/32" 11/12 32/34"



NECK TAPE  
FOR COMFORT  
AND DURABILITY



**GILDAN**  
Softstyle®

GD01B

**GD01B**

**Softstyle™ youth ringspun t-shirt**

F 100% Cotton, Sports Grey: 90% Cotton 10% Polyester  
W White 141gsm, Colours 150gsm

XS 3/4 S 5/6 M 7/8 L 9/11 XL 12/14



J539B



**J539B**

**Kids polo shirt**

65% Polyester, 35% Ringspun cotton piqué  
White 210gsm, Colours 215gsm

1/2 20/23" 3/4 22/25" 5/6 25/28"  
7/8 28/30" 9/10 30/32" 11/12 32/34"







FRUIT OF THE LOOM®

## SS419

### Kids Sofspun® T

F 100% Cotton, Heather Grey: 97% Cotton, 3% Polyester

W White 160gsm, Colours 165gsm

3/4 26" 5/6 28" 7/8 30" 9/11 32"

12/13 34" 14/15 36"



Black

Deep Navy

Red

Royal Blue

Orange

Sunflower

Kelly Green

Fuchsia

Heather Grey

White

SOFSpun® TEE

SS419

## SS271

### Classic 80/20 kids raglan sweatshirt

F 80% Cotton, 20% Polyester

W 280gsm

3/4 26" 5/6 28" 7/8 30" 9/11 32"

12/13 34" 14/15 36"



Black

Bottle Green

Burgundy

Deep Navy

Emerald



Heather Grey

Navy

Purple

Red

Royal Blue



SS271

RAGLAN SWEATSHIRT

# FASHION FIT FOR A RETAIL LOOK



## SS417

### Kids 65/35 piqué polo

F Easycare 65% Polyester, 35% Cotton blend

W White 170gsm, Colours 180gsm

3/4 26" 5/6 28" 7/8 30" 9/11 32"

12/13 34" 14/15 36"



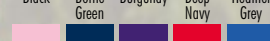
Black

Bottle Green

Burgundy

Deep Navy

Heather Grey



Light Pink

Navy

Purple

Red

Royal Blue



Sky Blue

Sunflower

White

PIQUÉ POLO

SS417

KIDS & SCHOOLWEAR

**Result®**

**core**  
VALUE®

**R200J**

**Core kids safety vest**

F 100% Polyester

W 120gsm

4/6 22.5/24" 7/9 25/27.5 10/12 29/31"



Fluorescent  
Yellow

**KIDS  
SAFETY VEST**



**R224J  
UNISEX**

**R224J**

**Core junior TX performance hooded softshell jacket**

F Outer-layer: 93% Polyester, 7% Elastane.

Mid-layer: Waterproof 8000mm, breathable 1000g and windproof TPU membrane.

Inner-layer: 100% Polyester microfleece

W 320gsm

Embroidery Open for embroidery

**XS** 3/4 **S** 5/6 **M** 7/8 **L** 9/10 **XL** 11/12

**2XL** 13/14

Microfleece inner

Full front zip with  
chin guard

Inner storm flap

Front pockets

Soft, high stretch

Reflective details

Open cuff



Royal/Navy



Black/Grey

Navy/Royal

Purple/Grey

Red/Black

Vivid Green/Black

**JUNIOR TX PERFORMANCE HOODED SOFTSHELL**

# B&C

COLLECTION

## B601B Sirocco /kids

F 100% Taffeta nylon, showerproof  
w 210T/70gsm

3/4 28" 5/6 30" 7/8 32" 9/11 34"  
12/14 36"



B601B



*Kids*  
ARE SO COOL

SHOWERPROOF

KIDS & SCHOOLWEAR

YOKO.



HI-VIS

## HI-VIS KIDS 2 B&B WAISTCOAT



YK100



## YK100 Kids hi-vis 2 b&b waistcoat (HVV100CH)

F 100% Polyester  
w 120gsm

S 28/30" M 32/34" L 36/38"







JC03J

### JC03J Kids contrast cool T

F 100% Polyester  
W 140gsm

XS 3/4 S 5/6 M 7/8 L 9/11 XL 12/13



Arctic White/Fire Red  
Arctic White/Jet Black  
Arctic White/Sapphire Blue  
Electric Pink/Arctic White  
Fire Red/Jet Black



French Navy/Arctic White  
French Navy/Fire Red  
Jet Black/Arctic White  
Jet Black/Fire Red  
Royal Blue/Arctic White



JC03J



KIDS CONTRAST COOL T

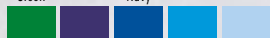
### JC90J Kids cool cap

F 100% Polyester  
W 67g

One size



Bottle Green  
Fire Red  
French Navy  
Hot Pink  
Jet Black



Kelly Green  
Purple  
Royal Blue  
Sapphire Blue  
Sky Blue

JC90J



JC90J



KIDS COOL CAP

ENSURE THE KIDS STAY ACTIVE IN OUR COOL RANGE

# KIDS COOL T

## KIDS SPORTS

JC01J



**JC01J**  
**Kids cool T**

F 100% Polyester  
w 140gsm

**XS** 3/4 **S** 5/6 **M** 7/8 **L** 9/11 **XL** 12/13

ENSURE THE KIDS STAY ACTIVE IN OUR COOL RANGE



# BASE LAYERS

Regulate your body temperature and improve performance in our base layer junior collection

**RH02B**



**RH01B**



**SOFT &  
LIGHTWEIGHT**

**RH10B**



**RH12B**



**RH12B**  
Rhino sports performance skirt - girls

F 88% Polyester, 12% Spandex  
W 170gsm

**SJ** 24" **MJ** 26" **LJ** 28"



Black Bottle Green Maroon Navy Red



Royal Blue White

**RH02B**

Rhino base layer short sleeve - juniors

F 90% Polyester, 10% Spandex  
W 250gsm

**5/6** 22" **XS** 24/26" **SY**/MY 28/30"  
**LY**/XLY 32/34"

**RH01B**

Rhino base layer long sleeve - juniors

F 90% Polyester, 10% Spandex  
W 260gsm

**5/6** 22" **XS** 24/26" **SY**/MY 28/30"  
**LY**/XLY 32/34"

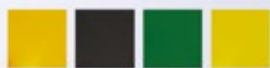
**RH10B**

Rhino base layer shorts - juniors

F 90% Polyester, 10% Spandex  
W 250gsm

**5/6** 18" **XS** 20" **S**/MY 22/24"  
**LY**/XLY 26/28"

RH01B, RH02B, RH10B  
AVAILABLE IN 17 COLOURS



Amber Black Bottle Green Fluorescent Yellow



Green Heather Grey Light Blue Light Pink



Maroon Navy Orange Pink



Purple Red Royal White



Yellow





**BA171**

**BA171**  
**B&C Women-only long sleeve**

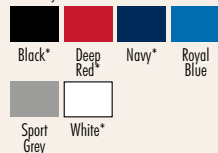
F Single jersey, 100% Pre-shrunk ringspun cotton

w 145gsm

**XS** 8 **S** 10 **M** 12 **L** 14 **XL** 16

**2XL** 18/20

\*2XL only available in these colours



★  
**LOVE  
MADNESS**  
★

**B190F**  
**Women's exact 190**

F Single jersey, 100% Pre-shrunk ringspun cotton

w 185gsm

**XS** 8 **S** 10 **M** 12 **L** 14 **XL** 16

**2XL** 18/20



**B190F**

**WE LOVE  
COLOURS**

100% SINGLE JERSEY  
PRE-SHRUNK  
RINGSPUN COTTON



Dark Grey Heather



Blue Marble



Neon Yellow



## BE089

### Flowy racerback tank top

F 65% Polyester, 35% Viscose. 30 single  
W 125gsm

S 8 M 10/12 L 14 XL 16



## BE093



### FLOWY OFF-THE-SHOULDER

## BE093

### Flowy off-the-shoulder long sleeve t-shirt

F 65% Polyester, 35% Viscose. 30 single  
W 125gsm

S 8 M 10/12 L 14 XL 16



**BELLA+CANVAS.**  
LOS ANGELES

# TRIBLEND SPONGE FLEECE

## BE070

### Sponge fleece wide neck sweatshirt

F 50% Polyester, 37.5% Combed and ring spun  
cotton, 12.5% Rayon. 30 single  
W 280gsm

S 8 M 10/12 L 14 XL 16



## TRIBLEND SPONGE FLEECE

SOFTER THAN SOFT

## BE070



# BELLA+CANVAS®

LOS ANGELES



BE115

Dark Grey Heather



Black

## FLOWY V-NECK DRESS

**BE115**

**Flowy v-neck dress**

F 65% Polyester, 35% Viscose. 30 single  
W 125gsm

S 8 M 10/12 L 14 XL 16



BE063

## BABY RIB CREW NECK T-SHIRT



BE032

**BE032**

**Baby rib short sleeve crew neck t-shirt**

F 100% Combed and ringspun cotton  
W 195gsm

S 8 M 10/12 L 14 XL 16 2XL\* 18

\*2XL only available in these colours



## JERSEY T-SHIRT DRESS

**BE063**

**Jersey t-shirt dress**

F 55% Combed and ringspun cotton,  
45% Polyester. 36 single  
W 130gsm

S 8 M 10/12 L 14 XL 16



Black Midnight White





## Poly/Cotton Short Sleeve Tee

WOMEN'S

AA056



## Cotton Spandex Jersey Crop Tee

WOMEN'S

AA041



AA056

**Poly/cotton short sleeve women's tee (BB301)**

F 50% Polyester, 50% Combed-cotton  
W 125gsm

S 30/32" M 32/34" L 36/38" XL 40/42"

AA041

**Cotton Spandex jersey crop tee (RSA8380)**

F Cotton/Spandex jersey. 95% Cotton, 5% Elastane. Heather Oatmeal: 92% Rayon, 8% Spandex  
W 190gsm

XS 8 S 10 M 12 L 14



## Figure-flattering Slinky Style

SK260

**Long sleeve slinky T**

F 100% Viscose single jersey  
W 170gsm

S 8/10 M 12/14 L 16 XL 18



Black

SK260



# CHOICE

IN COLOUR & SIZES

**PR300**

## PR300

### Women's poplin long sleeve blouse

F 65% Polyester, 35% Cotton, plain poplin weave  
W 105gsm

6 XXS 8 XS 10 S 12 M 14 L 16 XL  
18 2XL 20 3XL 22 4XL 24 5XL 26 6XL

## PR200

### Long sleeve poplin shirt

F 65% Polyester, 35% Cotton, plain weave  
W 105gsm

14.5" 34" 15" 36" 15.5" 38" 16" 40"  
16.5" 42" 17" 44" 17.5" 46" 18" 48"  
18.5" 50" 19" 52" 20" 54" 21" 56"  
22" 58"

\*20 to 22 only available in these colours



Sapphire

Turquoise

Royal

Light Blue

Mid Blue

**PR200**



Navy

Lilac

Purple



Rich Violet

Aubergine

Strawberry Red



Red

Burgundy



Hot Pink

Pink



Orange

Sunflower

White\*

Bottle

Lime



Emerald

Aqua

Natural

Khaki

Mocha



Brown

Black\*

Steel

Dark Grey

Silver



**PREMIER**  
UNIFORMS THAT WORK FOR YOU

### PR202

#### Short sleeve poplin shirt

F 65% Polyester, 35% Cotton, plain weave  
W 105gsm

14.5" 34" 15" 36" 15.5" 38" 16" 40"

16.5" 42" 17" 44" 17.5" 46" 18" 48"

18.5" 50" 19" 52" 20" 54" 21" 56"

22" 58"

\*20 to 22 only available in these colours

### PR302

#### Women's short sleeve poplin blouse

F 65% Polyester, 35% Cotton  
W 105gsm

6 XS 8 XS 10 S 12 M 14 L 16 XL

18 2XL 20 3XL 22 4XL 24 5XL 26 6XL



Sapphire  
Turquoise  
Royal  
Light Blue  
Mid Blue  
Navy  
Lilac  
Purple  
Rich Violet  
Aubergine  
Hot Pink  
Pink  
Burgundy  
Red  
Strawberry Red  
Orange  
Sunflower  
White\*  
Lime  
Bottle  
Emerald  
Aqua  
Natural  
Khaki  
Mocha  
Brown  
Black\*  
Steel  
Dark Grey  
Silver



# SATIN TIES



PR755



PR750

### PR755

#### Colours satin clip tie

F 100% Woven polyester satin weave

One size - Narrow blade width - 3.34"/8.5cm

### PR750

#### Colours satin tie

F 100% Woven polyester satin weave

One size - Blade width: 3.34"/8.5cm,  
Length: 57"/144cm



# KUSTOM KIT®



TAILORED FIT

KK109

## KK701

### Women's corporate Oxford blouse short sleeved

F 85% Cotton, 15% Polyester  
W 125gsm

6' 8' 10' 12' 14' 16' 18' 20' 22' 24' 26' 28"

\*6 only available in these colours

\*22, 24 and 26 only available in these colours

\*28 only available in these colours



## KK109

### Corporate Oxford shirt short sleeved

F 85% Cotton, 15% Polyester  
W 125gsm

14"" 14.5"" 15"" 15.5"" 16"" 16.5""

17"" 17.5"" 18"" 18.5"" 19"" 19.5""

20"" 21"" 21.5"" 22"" 22.5"" 23""

\*14" and 20" to 23" only available in these colours



# Oxford shirts

KK105



CLASSIC FIT

Mix style  
and quality  
with deep  
3-button  
cuff feature

## KK105

### Corporate Oxford shirt long sleeved

F 85% Cotton, 15% Polyester  
W 125gsm

14"" 14.5"" 15"" 15.5"" 16"" 16.5""

17"" 17.5"" 18"" 18.5"" 19"" 19.5""

20"" 21"" 21.5"" 22"" 22.5"" 23""

\*14" and 20" to 23" only available in these colours



**BR113**



**BR114**



**BR113**  
**Lucca slim fit shirt**

F 57% Polyester, 39% Cotton, 4% Elastane  
W 115gsm

Embroidery Embroidery, tax tabbing

**14.5" 15" 15.5" 16" 16.5" 17"**  
**17.5" 18"**

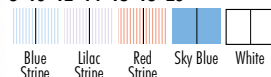


**BR114**  
**Women's Franca fitted blouse**

F 57% Polyester, 39% Cotton, 4% Elastane  
W 115gsm

Embroidery Embroidery, tax tabbing

**8 10 12 14 16 18 20**



**RUSSELL** SINCE 1862  
**COLLECTION**

**THE**  
**OXFORD**  
**SHIRT**  
**COLLECTION**

The distinctive weave structure creates an extremely durable fabric that not only looks the part, but also washes and irons beautifully.



**J932M**



**J932F**



**ALL OXFORD**  
**SHIRTS**

**AVAILABLE IN**  
**SIX COLOURS**



**J932M**  
**Long sleeve Oxford shirt**

F 70% Cotton, 30% Polyester  
W White 130gsm, Colours 135gsm

**14.5" 15" 15.5" 16" 16.5"**  
**17" 17.5" 18" 18.5" 19"**  
**19.5" 20" 21"**

**J932F**  
**Women's long sleeve easycare Oxford shirt**

F 70% Cotton, 30% Polyester  
W White 130gsm, Colours 135gsm

**XS 8 S 10 M 12 L 14 XL 16**  
**2XL 18 3XL 20 4XL 22 5XL 24 6XL 26**

# LOOKING GREAT

IN SOFT COTTON-RICH YARN

with  
PR694 & PR697 IN  
**8 COLOURS**

## HIS AND HER STYLES

### PR694

#### V-neck knitted sweater

F 55% Cotton, 45% Acrylic

W 12 Gauge knit

**XXS** 34" **XS** 37" **S** 40" **M** 43" **L** 46"

**XL** 49" **2XL** 52" **3XL** 55" **4XL** 58"



Black Bottle Burgundy Charcoal



Navy Purple Red Royal

### PR697

#### Women's button-through knitted cardigan

F 55% Cotton 45% Acrylic

W 12 Gauge knit

**8 XS** **10 S** **12 M** **14 L** **16 XL**

**18 2XL** **20 3XL** **22 4XL** **24 5XL**



Black Bottle Burgundy Charcoal



Navy Purple Red Royal

**PR694**

**PR697**

Red

Burgundy

Purple

Royal

Navy

Charcoal

Black

Bottle

**KNITWEAR**

### PR696

#### Women's v-neck knitted sweater

F 55% Cotton, 45% Acrylic

W 12 Gauge knit

**8 XS** **10 S** **12 M** **14 L** **16 XL** **18 2XL**

**20 3XL** **22 4XL** **24 5XL**



Black Navy

**PR696**

# LAYERS OF STYLE

COTTON RICH KNITWEAR

**KNITWEAR**





**J710M**



**RUSSELL**  
COLLECTION

## THE KNITTED COLLECTION

Easycare CottonBlend™ that combines the coolness and lightness of cotton with the softness, warmth and stain resistance of acrylic.



**J710F**

### **J710M** V-neck knitted sweater

F CottonBlend™ 50% Cotton,  
50% Acrylic blend, 12 Gauge  
W 275gsm

**XXS** 32/34" **XS** 34/36" **S** 36/38"  
**M** 38/40" **L** 40/42" **XL** 42/44"  
**2XL** 44/46" **3XL** 46/48" **4XL** 48/50"

### **J710F** Women's v-neck knitted sweater

F CottonBlend™ 50% Cotton,  
50% Acrylic blend, 12 Gauge  
W 275gsm

**XXS** 6 **XS** 8 **S** 10 **M** 12 **L** 14 **XL** 16  
**2XL** 18 **3XL** 20 **4XL** 22



Black

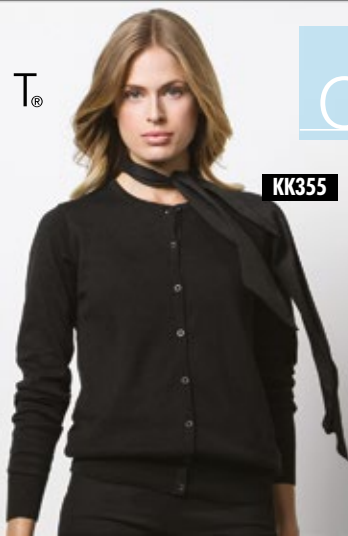


French Navy

ALL V-NECK  
KNITS  
AVAILABLE IN  
TWO COLOURS

## KUSTOM KIT®

*The button-up crew  
neck cardigan for a  
sophisticated look.*



**KK355**

### **KK355** Women's Arundel crew neck cardigan long sleeve

F 50% Cotton, 50% Acrylic  
W 12 Gauge

**6** 28" **8** 30" **10** 32" **12** 34" **14** 36"  
**16** 38" **18** 40" **20** 42"



Black

Navy

## Cardigans

# THE ULTIMATE

## APRON IN 58 TASTY

SHADES

### PR150 Colours bib apron

F 65% Polyester, 35% Cotton twill  
Denim: 70% Cotton, 30% Polyester  
W 195gsm

One size - width 72cm, length 86cm

Apple	Aqua	Aubergine	Black	Black Denim
Blue Denim	Bottle	Brown	Burgundy	Charcoal
Chestnut	Cornflower	Cyan	Dark Grey	Duck Egg Blue
Emerald	Fuchsia	Grey Denim	Hot Pink	Indigo Denim
Kelly	Khaki	Latte	Lavender	Lemon
Light Blue	Lilac	Lime	Magenta	Marine Blue
Mid Blue	Mocha	Mushroom	Mustard	Natural
Navy	Oasis Green	Olive	Orange	Pink
Pistachio	Purple	Raspberry Crush	Red	Rich Violet
Royal	Sage	Salsa	Sapphire	Silver Grey
Steel	Strawberry Red	Sunflower	Teal	Terracotta
Turquoise	White	Yellow		

PR150

### PR151 Mid-length apron

F 65% Polyester, 35% Cotton twill  
W 195gsm

One size - width 70cm, length 50cm

Apple	Aqua	Aubergine	Black	Bottle
Brown	Burgundy	Chestnut	Dark Grey	Emerald
Fuchsia	Hot Pink	Khaki	Lemon	Light Blue
Lilac	Lime	Marine Blue	Mid Blue	Mocha
Natural	Navy	Oasis Green	Olive	Orange
Pink	Purple	Red	Rich Violet	Royal
Sage	Sapphire	Silver Grey	Steel	Strawberry Red
Sunflower	Teal	Terracotta	Turquoise	White

PR151

## PR171

### Pocket tabard

F 65% Polyester, 35% Cotton twill  
W 195gsm

Dimensions Approx length 68cm

S 32/34" M 36/38" L 40/42"  
XL 44/46" 2XL 48/50" 3XL 52/54"



## PR154



## PR154

### Colours bib apron with pocket

F 65% Polyester, 35% Cotton twill  
W 195gsm

One size - width 72cm, length 86cm

Light Blue	Black
Turquoise	Dark Grey
Mid Blue	Steel
Sapphire	Silver
Royal	White
Marine Blue	Sage
Navy	Bottle
Lilac	Apple
Purple	Emerald
Rich Violet	Teal
Aubergine	Aqua
Hot Pink	Olive
Pink	Oasis Green
Fuchsia	Lime
Burgundy	Lemon
Red	Sunflower
Strawberry Red	Natural
Orange	Khaki
Terracotta	Mocha
Chestnut	Brown

CUSTOM KIT  
**bargear**

## KK513

### Bar apron short Superwash® 60°C unisex

F 100% Cotton twill  
W 280gsm

One size

Black	Lime	Navy	Orange	Purple
Raspberry	Red	Royal	Turquoise	White

## KK513



Zipped apron pocket



# Beauty

**PREMIER**  
UNIFORMS THAT WORK FOR YOU

## PR682

### Orchid beauty and spa tunic

F 100% Polyester plain weave with inherent stretch capabilities

W 185gsm

6 XXS 8 XS 10 S 12 M 14 L 16 XL  
18 2XL 20 3XL 22 4XL 24 5XL

PR682

## PR534

### Senna beauty and spa crop trouser

F 100% Polyester plain weave with inherent stretch capabilities

W 185gsm

8 24" 10 26" 12 28" 14 30" 16 32"  
18 34" 20 36" 22 38" 24 40"

Leg length - 21"



Black

PR534



SENNA BEAUTY AND  
SPA CROP TROUSER

HEALTH & BEAUTY

**PR671**



**PR671**  
**Women's long sleeve chef's jacket**

F 65% Polyester, 35% Cotton  
W 195gsm

**XS 8 S 10 M 12 L 14 XL 16 2XL 18**



White

**PR668**

**Culinary pull-on chef's short sleeve tunic**

F 65% Polyester, 35% Cotton twill  
W 195gsm

**XS 33" S 37" M 40" L 42" XL 46"**  
**2XL 49"**



White

**PR668**



**PR670**

**Women's short sleeve chef's jacket**

F 65% Polyester, 35% Cotton  
W 195gsm

**XS 8 S 10 M 12 L 14 XL 16 2XL 18**



White

**PR670**



**CHEF'S**  
**TROUSERS**

**PR552**

**Pull-on chef's trouser**

F 65% Polyester, 35% Cotton with woven checks  
W 195gsm

**XS 28/30" S 32/34" M 34/36" L 36/38"**  
**XL 38/40" 2XL 42/44"**

Navy / White Check

**PR552**

Black / White Check



Close-up detail



Close-up detail

**PR553**

**Essential chef's trouser**

F 65% Polyester, 35% Cotton, printed twill check  
W 195gsm

**XS 28/30" S 32/34" M 34/36" L 36/38"**  
**XL 38/40" 2XL 42/44"**

Black / White Check

**PR553**

Black

Black / Grey Fine Stripe



Close-up detail

# DURATWILL

HARD-WEARING WORK TROUSERS  
MADE IN DIRT-REPELLENT  
DURATWILL FABRIC

**Snickers®**  
WORKWEAR

HOLSTER POCKETS AND  
PHONE COMPARTMENT  
KNEEPAD POCKETS DESIGNED  
FOR SUPERIOR KNEE PROTECTION

SI001

ADVANCED CUT,  
TWISTED LEG FIT

## SI001 Duratwill craftsmen trousers (3212)

F 52% Cotton, 48% Polyamide. Featuring 100%  
Cordura®-Polyamide reinforcements  
W 240gsm

30" 31" 33" 35" 36" 38"

Inside leg: Short, Regular

COLOUR  
WAYS

MUTED BLACK  
/BLACK

BLACK

## SI010 Logo hoodie (2815)

F 80% Cotton, 20% Polyester  
W 330gsm

S 38" M 41" L 44" XL 49" 2XL 52"



Black Navy

# LOGO HOODIE

SI010

WORKWEAR





**WD020**

Black

# **REDHAWK SHORTS**

**WD020**

**Redhawk shorts (WD834)**

F 65% Polyester, 35% Cotton  
W 260gsm

**30" 32" 34" 36" 38" 40" 42"**

Inside Leg: Regular



Navy

**WD031**

**Painter's bib and brace (WD650)**

F 100% Cotton  
W 245gsm

**M 40/42" L 44/46" XL 48/50"**

**2XL 52/54"**

White



**WD031**

**ADJUSTABLE  
STRAPS**

# **PAINTER'S BIB & BRACE**

**REDHAWK  
ZIPPED  
COVERALL**

**TWO WAY METAL  
ZIP FRONT**

**WD001**

**FULL BACK  
ELASTICATION**

**MULTI-POCKETS**



**WD001**

**Redhawk zippered coverall (WD4839)**

F 65% Polyester, 35% Cotton  
W 260gsm

**42" 44" 46" 48" 50" 52" 54"**

Inside leg: Regular 30"



# WORK-GUARD

by **Result**

**R303X**

Black

Navy

## R303X

**Work-Guard Sabre stretch trousers**

F 63% Polyester, 34% Cotton,  
3% Elastane

**XS** 30" **S** 32" **M** 34" **L** 36"

**XL** 38" **2XL** 40" **3XL** 42"

**4XL** 44" **5XL** 46"

Inside leg: Regular 32", Long 34"



**R300X**

WORK-GUARD **SABRE PILOT JACKET**

## R300X

**Work-Guard Sabre pilot jacket**

F Outer: 320gsm 100% Oxford polyester with PVC coating.  
Lining: 190T 100% Polyester taffeta. Filling: 160gsm 100% Polyester wadding

**XS** 34" **S** 38" **M** 41" **L** 44" **XL** 47" **2XL** 50" **3XL** 53" **4XL** 56"



Black Navy

WORKWEAR

# SAFE-GUARD

by **Result**

**SAFEGUARD  
HIGH-VIZ VEST**

**RE21A**

## RE21A

**Safeguard high-viz vest**

F 100% Polyester

w 150gsm

**S/M** 39" **L/XL** 46" **2XL** 52" **3XL** 58"



Fluorescent  
Orange



Fluorescent  
Yellow



**PW200**

## PW200

**Euro work polycotton  
coverall (S999)**

F 65% Polyester, 35% Cotton  
w 210gsm

**M** 40/41" **L** 42/44" **XL** 46/47"

**2XL** 48" **3XL** 50/52"

Inside leg: Regular 31", Tall 33"



Bottle Navy Royal





# 27 86

ADMIRE the view



TS011

## TS011 Contrast lightweight jacket

F 100% Polyester  
W 55gsm

S 38" M 41" L 44" XL 47" 2XL 50"



CONTRAST



TS010

## LIGHTWEIGHT JACKET

Jacket folds away into pocket  
Wind resistant and shower proof  
Easy re-label system

100% Polyester. 55gsm



## TS010 Lightweight jacket

F 100% Polyester  
W 55gsm

S 38" M 41" L 44" XL 47" 2XL 50"



27  
86

ADMIRE the view

TS012

TS12F

TS012  
Softshell jacket

S 38" M 41" L 44" XL 46"  
2XL 48" 3XL 50"



TS12F  
Women's softshell jacket

XS 8 S 10 M 12 L 14 XL 16  
2XL 18



- KEEPS YOU COSY
- SHAPED TO FIT
- LIKES WINDY DAYS
- LOVES SHOWERS
- BREATHABLE
- SMARTPHONE FRIENDLY

GREAT PRODUCT  
ADMIRE  
27  
86  
THE VIEW  
FOR DECORATION

# SOFTSHELL

3 layer bonded softshell  
Contemporary styling

Windproof and water-resistant

100% Polyester woven shell bonded to a 100% Polyester microfleece lining with PU membrane. 320gsm

TEAR-OUT

LABEL

JACKETS

# 27 86

# ZIP FLEECE

ADMIRE the view

TS14F

TS014

## TS14F Women's full zip fleece

F 100% Polyester anti-pill fleece  
w 280gsm

**XS 8 S 10 M 12 L 14 XL 16 2XL 18**



## TS014 Full zip fleece

F 100% Polyester anti-pill fleece  
w 280gsm

**XS 36" S 38" M 41" L 44" XL 46"  
2XL 48" 3XL 50"**





- KEEPS YOU COSY
- SHAPED TO FIT
- LIKES WINDY DAYS
- LOVES SHOWERS
- SMARTPHONE FRIENDLY

27  
86

ADMIRE the view

TS15F

TS015

# BODY WARMER



Warm polyfill quilted styling • Two zip closed front pockets • Base drawstring adjuster

Outer: 100% Nylon. Inner: 100% Polyester. Outer: 60gsm. Filling: 270gsm. Lining: 50gsm



**TS15F**  
Women's bodywarmer

**XS 8 S 10 M 12 L 14 XL 16 2XL 18**



Black Navy



**TS015**  
Bodywarmer

**S 38" M 41" L 44" XL 47" 2XL 50" 3XL 53"**



Black Navy



## WOMEN'S



Black Bright Yellow Pink Navy Red Royal Steel

## MEN'S



Black Bright Yellow Navy Red Royal Steel

### TS18F

#### Women's tribe fineline padded jacket

F Outer: 100% Nylon. Filling: 100% Polyester. Lining: 100% Nylon  
W Shell: 300gsm. Padding: 228gsm. Lining: 50gsm

**XS** 35" **S** 37" **M** 39" **L** 41"  
**XL** 43" **2XL** 45"

### TS018

#### Men's tribe fineline padded jacket

F Outer: 100% Nylon. Filling: 100% Polyester. Lining: 100% Nylon  
W Shell: 40gsm. Padding: 228gsm. Lining: 50gsm

**XS** 35" **S** 37" **M** 39" **L** 41" **XL** 43"  
**2XL** 45"

- ▲ Full zip fastening
- ▲ Narrow padded quilting
- ▲ 'Stuff Bag' for carrying



FEELS LIGHT



LIKES WINDY DAYS



LOVES SHOWERS



SMARTPHONE FRIENDLY

# 27 86

ADMIRE the view

TS18F

TS018

TS16F

TS016



Black/Black

Black/  
Bright Yellow

Black/Orange

Black/Lime



Black/Red

Royal/Grey

Red/Navy

### TS16F

#### Women's padded jacket

**XS** 8 **S** 10 **M** 12 **L** 14 **XL** 16 **2XL** 18

### TS016

#### Padded jacket

**XS** 36" **S** 38" **M** 41" **L** 44" **XL** 46" **2XL** 48"

## FULL PADDED

Warm polyfill quilted filling • Water and wind resistant • Fully lined hood with adjusters

Outer: 100% Nylon. Filling: 100% Polyester.  
Lining: 100% Nylon. Shell: 40gsm. Padding: 228gsm. Lining: 50gsm

## THOR III FLEECE

### RG122

#### Thor III fleece

F 280 series anti-pill symmetry fleece  
W 280gsm

**XS** 35/36" **S** 37/38" **M** 39/40" **L** 41/42"

**XL** 43/44" **2XL** 46/48" **3XL** 49/51"

**4XL** 52/54"

Bayleaf	Black	Bordeaux	Bottle	Classic Red
Clay	Coastal Blue	Dark Navy	Dark Steel	Firebrick
Glowlight	Royal	Seal Grey		

### RG123

#### Women's Thor III fleece

F 280 series anti-pill symmetry fleece  
W 280gsm

**10 12 14 16 18 20**

Black	Blue Skies	Bottle	Classic Red	Dark Navy
Pink Mist	Royal			

### RG123

Interactive fleece, shaped fit

Anti-pill symmetry

2 zipped lower pockets

Adjustable shock cord hem

### RG045

#### Dover jacket

F Waterproof Hydratort 5000 polyester fabric

W 295gsm

**XXS** 33/34" **XS** 35/36"

**S** 37/38" **M** 39/40" **L** 41/42"

**XL** 43/44" **2XL** 46/47"

**3XL** 49/51" **4XL** 52/54"

\*XXS and 4XL only available in these colours

### RG045





**Result®**

**core**  
VALUE®

FASHION FIT OUTDOOR FLEECE

**R220X**  
Core fashion fit  
outdoor fleece

F Outer: 100% Polyester, 280gsm  
luxury plush compact feel fleece  
W Outer: 280gsm

**XS\*** 33" **S** 38" **M** 41" **L** 44"

**XL** 46" **2XL** 48" **3XL** 50"

\*XS only available in these colours.



**Result®**

**urban**  
OUTDOOR WEAR



CHELTENHAM JACKET



MIDWEIGHT JACKET



CORE BODYWARMER

**R195X**  
Urban Cheltenham jacket

F Outer: 2x2 Diamond quilted 210T 100% Polyester  
Taffeta with A/C coating. Inner: 100% Polyester 4oz  
polyester wadding. Lining: 190T Polyester taffeta  
W 515gsm

**XS** 34" **S** 38" **M** 41" **L** 44" **XL** 47"

**2XL** 50" **3XL** 53"



All Black All Navy

**R206X**  
Core midweight jacket

F Outer: 190T Polyester pongee StormDri 2000 coating.  
Lining: 130gsm single jersey polyester.  
Sleeve lining: 100% Polyester

W 847gsm

**S** 38" **M** 41" **L** 44" **XL** 47" **2XL** 50" **3XL** 53"



Black Navy Red Steel Grey

**R208X**  
Core bodywarmer

F Outer: 210T Polyester with A/C coating. 55gsm.  
Inner: 100% Polyester, 5oz polyfill wadding

W 386gsm

**XS** 34" **S** 38" **M** 41" **L** 44" **XL** 47"

**2XL** 50" **3XL** 53"



Black Bottle Navy Red



BAGBASE CONTINUES TO PUT THE 'FUN' INTO 'FUNKY' BAG DESIGNS WITH AN INCREDIBLE COLLECTION WHICH MIRRORS ALL THE CURRENT FASHION TRENDS - FROM CAMO TO VARSITY AND VINTAGE - WITH EACH NEW STYLE OFFERING A FRESH ALTERNATIVE TO RUN OF THE MILL BAG PRODUCTS.

**BG014**



## BG014 Retro shoulder bag

F 600D Polyester  
W 460g  
Dimensions 40 x 28 x 18cm  
Capacity 18 Litres  
Embroidery 15 Tubular hoop  
Print Area 34 x 13cm

### One size



Black/White   Black/Classic Red   Black/Fuchsia   Black/Gold   Bottle Green/White



Bright Royal/White   Burgundy/Sand   Chocolate/Sand   Classic Red/White   French Navy/Classic Red



French Navy/White   Graphite Grey/Black   Pure Green/White   White/Black

**BG005**



## BUDGET GYMSAC

### BG005 Budget gym sac

F 210D Polyester 80gsm  
W 50g  
Dimensions 45 x 33cm  
Capacity 11 Litres  
Embroidery 18 Tubular hoop  
Print Area 29 x 26cm

### One size



Black   Fuchsia   Lime Green   Navy   Orange



Red   Royal   White

**BG544**



### BG544 Athleisure holdall

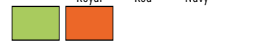
F 600D/420D Polyester combination  
W 830g  
Dimensions 54 x 29 x 26cm  
Capacity 30 Litres

Embroidery Front pocket: 18 flat bed hoop.  
End pocket: 18 flat bed hoop.  
Print Area Front pocket: 28 x 13cm.  
End pocket: 17 x 15cm

### One size



Black   Bright Royal   Classic Red   French Navy   Fuchsia



Lime Green   Orange

## Premium Gymsac



Airforce  
Blue

### BG010 Premium gym sac

F 210D Polyester 100gsm  
W 80g  
Dimensions 45 x 34cm  
Capacity 11 Litres  
Embroidery 18 Tubular hoop  
Print Area 29 x 26cm

### One size

**BG010**



# HALF DOME SPORTS BAG

- Sized to fit locker
- Front zipped pocket
- Standard webbing shoulder strap
- Side grab handle



**OG010**



**OG001**



## OG001 Bullion backpack

F 4200 Dobby poly  
W 0.72Kg

Dimensions Overall size: 19" x 13" x 9"

Laptop sleeve: 10.5" x 15.5" x 1.5"

Fits most 17" laptops

Capacity 31 Litres

Print Area Front centered: 12cm (3.75" diam)

### One size



Black/  
Silver

## OG010 Half dome sports bag

F 6000 poly/4200 Dobby poly  
W 0.5kg

Dimensions 10" x 18" x 9"

Capacity 29.5 Litres

Print Area Front centred: 12cm (3.75" diam).

Back side: 15cm (4.90" diam)

### One size



Black/  
Black Hot Pink/  
Black Red/  
Black Royal/  
Black

## PROMO BAGS

### SHOULDER SHOPPER

**RL100**

#### RL100 Cotton promo shoulder shopper

F 100% Cotton

W 135g

Dimensions 41 x 36cm

Capacity 10 Litres

#### One size



Natural



Westford  
Mill

**WM100**



#### WM100 Budget promo bag for life

F 100% Cotton - 100gsm

W 48g

Dimensions 38 x 42cm Capacity 10 Litres

Embroidery 18 Tubular hoops Print Area 36 x 33cm

#### One size



Natural

All decoration shown is for  
illustrative purposes only.  
The garments are supplied blank.

## Think Headwear. Think Beechfield!

Beechfield has been designing, manufacturing and supplying brandable headwear for more than 20 years. In that time, we've learnt what makes the difference between good headwear and a treasured wardrobe favourite that will be worn time and time again. We pride ourselves on pouring all of that experience and expertise into every product we make.

### sherpa hat

faux fur trim

**BC345**



#### BC345 Sherpa hat

F 100% Nylon Tasson outer  
W 105g

S/M L/XL



### ultimate 5 panel

cap

**BC015**



#### BC015 Ultimate 5 panel cap

F 100% Cotton drill  
W 75g

One size (adjustable)



## FLEXFIT®

**YP006**



#### YP006 Flexfit double jersey cap (6778)

F 63% Polyester, 34% Cotton, 3% Spandex

S/M L/XL



**YP001**



#### YP001 The classic snapback (6089M)

F 80% Acrylic, 20% Wool

One size (adjustable)



**BC010**

#### BC010 Original 5 panel cap

F 100% Cotton twill  
W 67g

One size (adjustable)







## KNITTED TURN-UP BEANIE



**NS001**

### NS001 Knitted turn-up beanie

£ 100% Soft knit acrylic  
w 70gsm  
Pinst Area 5cm wide turn-up cuff  
**One size**



## Beechfield® ORIGINAL HEADWEAR



**BC479**

### BC479 Varsity scarf

£ 100% Soft-touch acrylic  
w 170g  
Dimensions 182 x 18cm  
**One size**



**R146X**

**Result®**

**winter**  
ESSENTIALS

### R146X The supporters scarf

£ 100% Acrylic  
**One size** - 140 x 70cm

